



Amaia 

IoT & BigData Platform

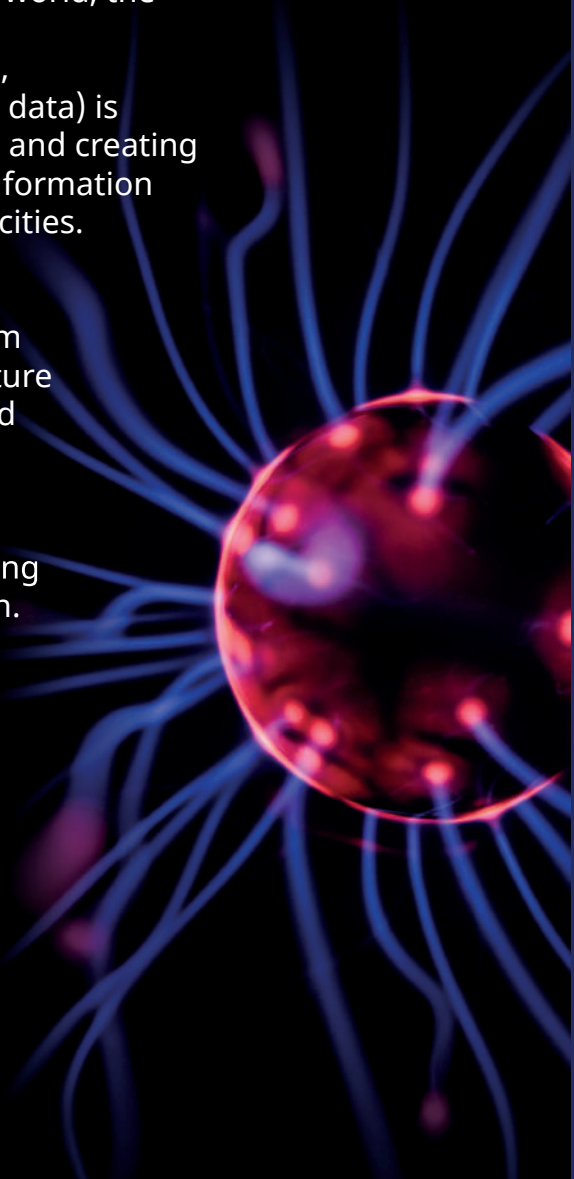
**Make your data shine:
connect, monitor, plan and optimize.**

 **Wellness TechGroup**
Touch the future

THE HYPERCONNECTIVITY PARADIGM

In our hyperconnected world, the data generated by organizations (IoT data, real-time and historical data) is dramatically increasing and creating disconnected silos of information within enterprises and cities.

A Cognitive Platform to unveil new insights from volumes of multi-structure data, both real-time and historical, enabling the development of added value applications for efficiency, smart planning and optimum operation.



Content

01. What is Amaia?
02. Technical specifications
03. Use cases
04. Benefits

What is Amaia?

A transversal and integrative Big Data platform designed to boost the digitization of services, optimize resources and improve the profitability of companies and public administrations



Amaia in 5 steps

- 01 360° view of service**
Advanced processing and treatment engines provide a unified view with key indicators of the different services and digitized solutions
- 02 Real-time information**
Acquires data from any IoT source and provides real-time information to users
- 03 Business optimization**
Data collection and analysis enables incident detection, optimization of production processes and organizational improvements
- 04 Expertise & leadership**
Native vertical solutions widely deployed in the market enable reliable, fast and efficient project execution
- 05 Grow to meet your needs**
SaaS model, modularity, regulatory compliance, dashboards, and configurable KPIs on-the-fly



Amaia provides a single and holistic interface to manage the information of different IoT applications and multiple data sources in a Big Data infrastructure, creating a robust and scalable analytics ecosystem.

This horizontal and open platform automates the analysis of operational KPIs, metrics and related contextual information correlating multiple data sources to discover new opportunities to improve business operations.

Available Machine Learning libraries and Simulation embedded techniques makes Amaia the suitable tool to automatically detect and alert of issues, patterns, threshold deviations and faults making possible the prescription of actions for operational improvements and cost reduction.

With Amaia a real data-driven operation is possible, delivering user-friendly analytics and dashboard-based monitoring of metrics whilst supporting decision makers with an AI based recommender solution to assist on every situation with confidence and effectiveness.

Technical Specifications



Gestión de Dashboards

The platform's Dashboard has a simple unified access interface with the following characteristics:

- Responsive web: Web access (PC, Tablet / Smartphone).
- Dashboard Manager to customize the information displayed.
- Extensive library of predefined and editable widgets that allow you to display any specific attribute hosted in the database.
- Graphs of historical data and data monitoring in real time.
- aps display georeferenced information of assets and devices are compatible with the market offering including Google Street Map, OpenStreetMap, ESRI ArcGIS, etc.
- Graphs, tables, KPIs and maps.



Management of verticals, tenants and sites. Multi-tenant:

Allows you to manage one or more organizations within the same platform, reducing operational costs.

Multi-site: The application allows you to have different sites within the same organization or tenant.

Multi-vertical: Allows for different verticals on the same site: native and third-party.



User Management:

Amaia has an authentication and authorization service that, once logged in, allows the user to operate with all the elements of the platform in a secure and transparent manner. It also enables integration with LDAP.

Controlled access to information using multiple configurable profiles and roles under the same environment.



Device Management:

Amaia has an IoT data acquisition module that enables integration with any IoT device using standard communication protocols in the market: MQTT, CoAP, AMQP, Sigfox, LoRaWAN, HTTPS, UDP, OPC-UA.

For native verticals, the application has an Endpoint Module for remote device management and configuration; auto-provisioning of devices, FW update and set default configuration templates.



Data management

- ETL engine that powers the integration, transformation and serialization of multiple data streams from different sources (IoT broker, API-Rest...).
- Georeferenced inventory allows for real-time monitoring and information enrichment by associating assets and attributes with the devices.
- Storage in different OLAP databases allows users to easily extract selective data, and visualize it from different points of view.



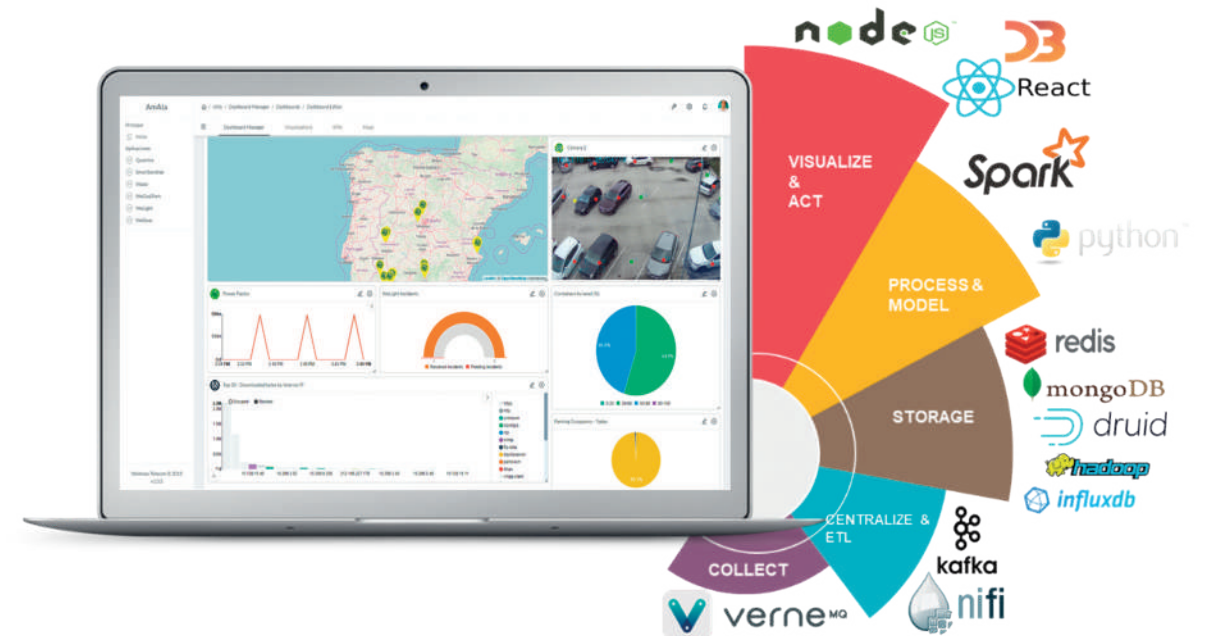
Interoperability:

REST API for interoperability with other platforms means data can be exported to any system.



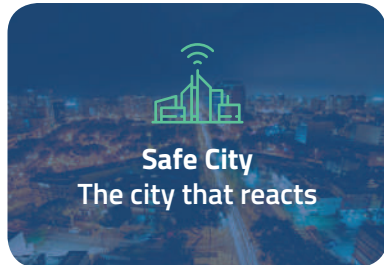
Our software platforms bring valuable and actionable city insights to our customers to improve operations and reduce costs. They comply with all Smart City and IoT standards as well as security protocols and APIs, making them open, scalable, secure and interoperable tools capable of integrating with other city systems and technologies.

The platforms utilize a layered architecture and databases that are specifically designed for the IoT paradigm.



USE CASES

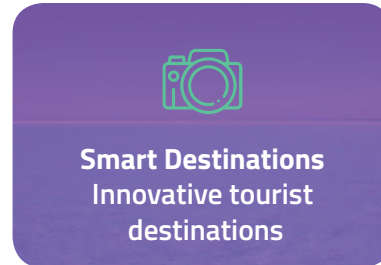
How Amaia improves the management of cities and businesses



Integration of multiple verticals for correlated data and actionable insight to support decision-making.



Efficient city management and resource allocation.



A solution that revolutionizes tourism management by making all tourist generated data available in one place.



A platform to manage university facilities.



Value chain management through platform.



Capture data from the field and transform them into competitive advantages.

Benefits

01. Improved decision-making
02. Historical analysis in real-time
03. Multi-tenant platform with unlimited profile creation and permissions
04. Improved quality and control with multiple integrated services
05. Alerts and notifications from stored data
06. Optimization of resources and costs and improved service

Wellness TechGroup designs and delivers smart technology solutions that make cities, territories, and companies safer and more efficient.

Spain

Seville

Calle Santo Tomás, 13
41004, Seville
Sevilla
Tel. +34 954 151 706
info@wellnesstg.com
www.wellnesstg.com

Málaga

Tel. +34 690 182 390
malaga@wellnesstg.com

Madrid

Tel. +34 678 778 168
madrid@wellnesstg.com

Australia

Adelaide

+61 457 156 025
australia@wellnesstg.com

United States

Orlando

+1 /435) 306-2687
usa@wellnesstg.com

Mexico

Mexico City

+52 (1) 453 08081
mexico@wellnesstg.com

Germany

Munich

+49 172 821 7233
germany@wellnesstg.com

Sweden

Kalmar

+46 702 312 454
sweden@wellnesstg.com



© 2021 Wellness TechGroup. All rights reserved. Specifications are subject to change without notice. No representation or warranty as to the accuracy or completeness of the information included herein is given and any liability for any action in reliance thereon is disclaimed. Version 2 | January 25 2021